



ES-HEM500

3 Part Auto Hematology Analyzers



LABORATORY



ES-HEM500

3 Part Auto Hematology Analyzer

Description

- **ES-HEM500** version with keyboard and mouse **ES-HEM500 Plus** version with touchscreen
- High reliability & Safety (The most advanced technology and structure)
- Adopting the most advanced binuclear embedded digital circuit system makes the analytical ability great and stable.
- Separate test units of WBC and RBC makes the test results more accurate and less cross-contamination.
- Adopting CPLD technology in data processing, free from the interference of electromagnetic signals.
- Easy operation
- Easy operating interface
- Dual test units, fast and convenient
- Module design, fast maintenance
- Economical and Durable
- Long life of the machine, all accessories with high performance
- Classic design of highly reliable fluid pipe structure
- Long-term stability, accurate and reliable clinical test results is the core of ES-HEM500

Features

- Principle: electrical impedance for counting and SFT method for hemoglobin.
- Test parameters: 23 parameters WBC, LYM#, MID#, GRA#, LYM%, MID%, GRA%, RBC, HGB, HCT, MCV, MCH, MCHC, RDW-CV, RDW-SD, PLT, MPV, PDW, PCT, P-LCR, and three-part differentials including WBC, RBC, PLT color histogram.
- Sample quantity: 9 μ L venous blood, 20 μ L pre-dilution blood.
- Sample Pre-dilution: internal diluter, add 1ml diluent automatically by the needle; no need to add diluent manually, to avoid error and make the operation more convenient and standard.
- Working model: dual-channel testing.
- Aperture: WBC: 80 μ m RBC/PLT: 50 μ m
- Throughput: Automatic sampling, 60 samples per hour.
- Results storage: Storage of 10,000 patients' results (including histogram).
It is more convenient to manage and review historical data.
- Reference value setting: For general use, male, female, children, newborns.
- Calibration: Manual and automatic calibration
- QC: comprehensive QC program, forming and printing the histogram automatically.
- Performance index: precision (CV) linear rang

WBC \leq 1.5%	0.00~99.9 \times 10 ⁹ /L
RBC \leq 1.5%	0.00~99.9 \times 10 ¹² /L
HGB \leq 1.5%	0~300g/l
PLT \leq 4.0%	0~999 \times 10 ⁹ /L
MCV \leq 0.3%	40~150fL
- Boot check: Self check for hardware, alarm for disorder
- Clog-removal: Real time monitor, high ignition, soak, flush and back flush
- Classification: Floating landmark technique
- Mainframe control: ARM Intelligent micro-processing technology and high-performance document-management, display and print-processing.
- Data analysis: intelligent pulse formulation techniques
- Structural features: separate module design



ES-HEM500

3 Part Auto Hematology Analyzer

Features

- Display : 10.4" large color LCD displays all parameters and histograms simultaneously
- Print: internal thermal printer or USB port universal printer (matching)
- Output: 3 USB port, 1 parallel printer port, 2 RS232 port
- Ambient Conditions:
 Temperature: 15-30°C ; Humidity: ≤80%
 Atmospheric pressure: 70Kpa-106Kpa
 Power supply: AC220V±22V, 50Hz±1Hz
 Dimensions: 325 x 370 x 545 mm - Weight: 15 kg

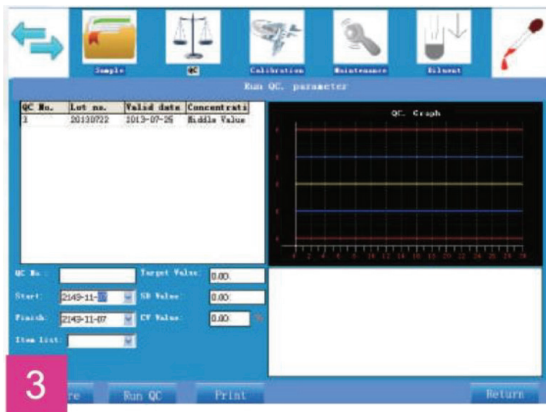
Software



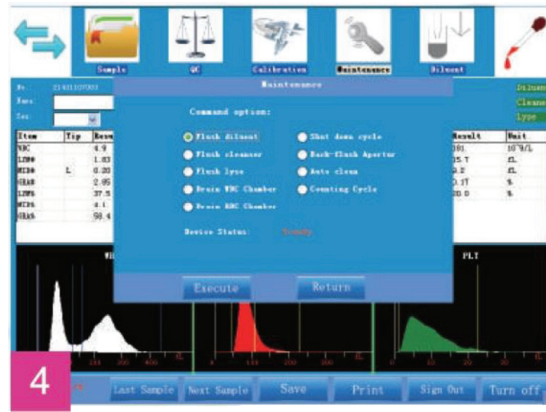
● Full screen info with color histogram



● Calibration info



● QC info



● Maintenance info



ES-HEM500

3 Part Auto Hematology Analyzer

Reagents



Start-up kits

Diluent 20L

Lyse-1 250ml

Lyse-2 250ml

Probe cleanser 100ml



ESSE3 srl, Via Garibaldi 30
14022 Castelnuovo D.B. (AT)
Tel +39 011 99 27 706
Fax +39 011 99 27 506
e-mail esse3@chierinet.it
web: www.esse3.dreamgest.com

